

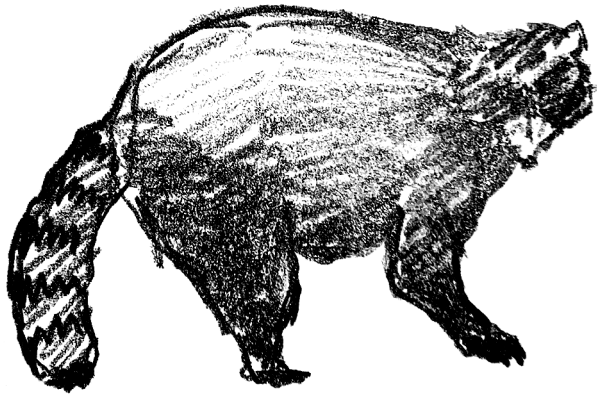
# **Raccoon Hunting**

## **Lukas Dilger**



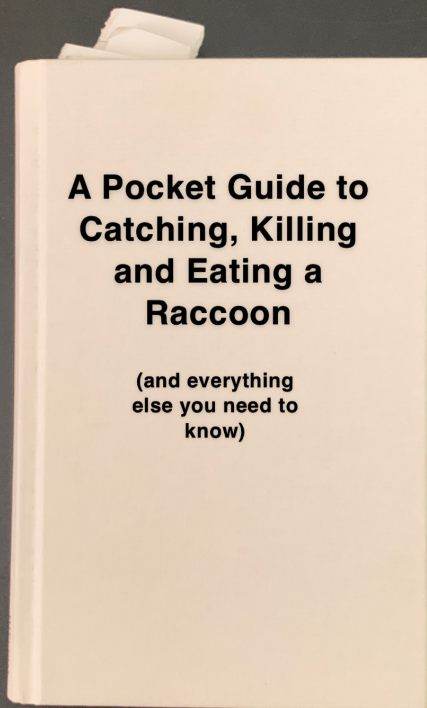
**Fact:**

Starting point for the project was the fact that raccoons have become an invasive species in Germany and are a danger to many local animals and they are also starting to live in our cities. However most people have not yet realized that.



## **Approach:**

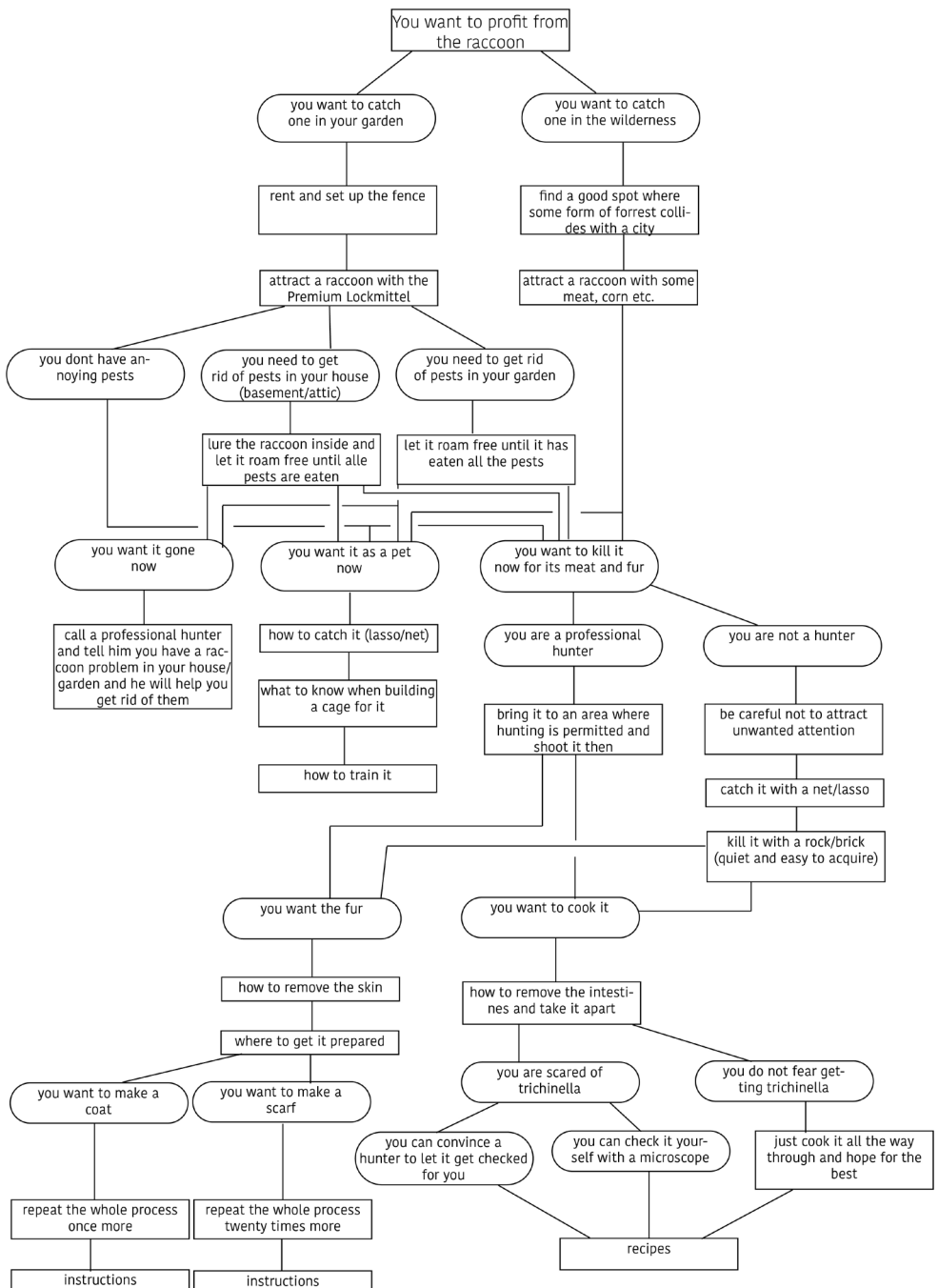
The first idea was to create a cookbook or another kind of book to make people aware of this problem and to explore different possibilities on how we could use that fact for our benefit.



The pocket guide in the end did not become a book but one big spreadsheet folded together like a hiking map so you can take it to every place you want to go hunting for a raccoon.



The first draft of the structure >







To attract a raccoon you have to put out some food at a distance in front of your dog. Dog food, corn, meat or fish will do the trick. You can also use the special bait from Amazon. Once you've got a raccoon you can use it for your own purposes.



## Cart

A high raccoon density is found in the city of Berlin. The raccoon is a very intelligent animal and it is able to learn from its mistakes.

If you don't take any precautions you can avoid many of the worst cases.

When you're out for a walk, don't let your dog sniff at the ground. If you see a raccoon, don't approach it. It's better to stay away from it. If you see a raccoon, don't approach it. It's better to stay away from it. If you see a raccoon, don't approach it. It's better to stay away from it.

It's not a good idea to let your dog sniff at the ground.

Feeding your dog is not a good idea. You should not let your dog sniff at the ground. You should not let your dog sniff at the ground. You should not let your dog sniff at the ground.

Now you have to reach the nearest object using a walking stick. Their goal is to be the next best way to get to the food or to get to the food.

As soon as you see a raccoon, you should cut it down. There are off the top and cut the skin. Then cut off the chest and the inner legs. Then peel the skin off towards the head. Once you reach the tail, peel the skin away from the body so you can see and cut through the tailbone. Then cut the tail and peel the skin off towards the head and cut it off.



When you're out for a walk, don't let your dog sniff at the ground. If you see a raccoon, don't approach it. It's better to stay away from it. If you see a raccoon, don't approach it. It's better to stay away from it. If you see a raccoon, don't approach it. It's better to stay away from it.

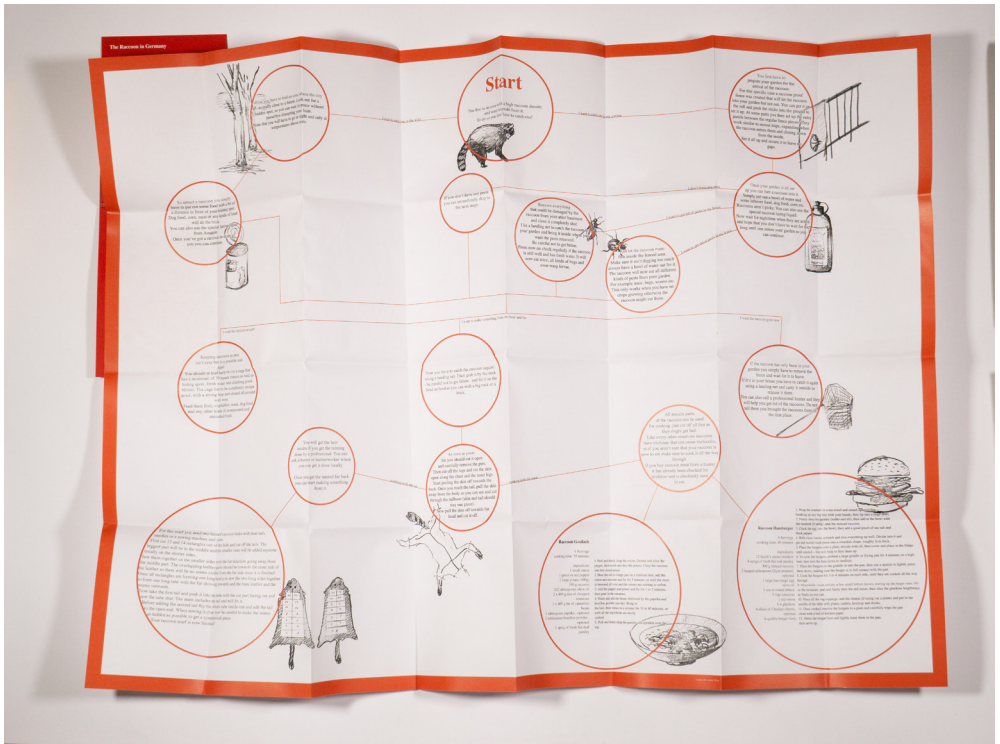
## Raccoon Control

1. First and foremost, be careful. Don't let your dog sniff at the ground.
2. If you see a raccoon, don't approach it. It's better to stay away from it.
3. If you see a raccoon, don't approach it. It's better to stay away from it.
4. If you see a raccoon, don't approach it. It's better to stay away from it.
5. If you see a raccoon, don't approach it. It's better to stay away from it.
6. If you see a raccoon, don't approach it. It's better to stay away from it.
7. If you see a raccoon, don't approach it. It's better to stay away from it.
8. If you see a raccoon, don't approach it. It's better to stay away from it.
9. If you see a raccoon, don't approach it. It's better to stay away from it.
10. If you see a raccoon, don't approach it. It's better to stay away from it.



When you're out for a walk, don't let your dog sniff at the ground. If you see a raccoon, don't approach it. It's better to stay away from it. If you see a raccoon, don't approach it. It's better to stay away from it. If you see a raccoon, don't approach it. It's better to stay away from it.

When you're out for a walk, don't let your dog sniff at the ground. If you see a raccoon, don't approach it. It's better to stay away from it. If you see a raccoon, don't approach it. It's better to stay away from it. If you see a raccoon, don't approach it. It's better to stay away from it.

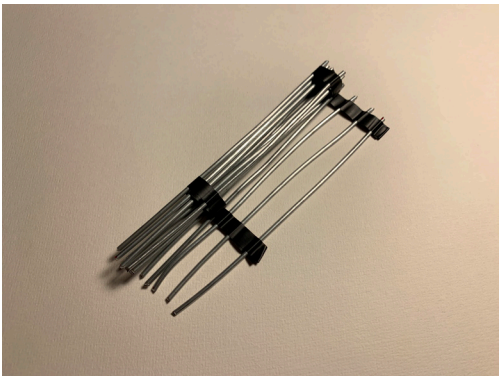
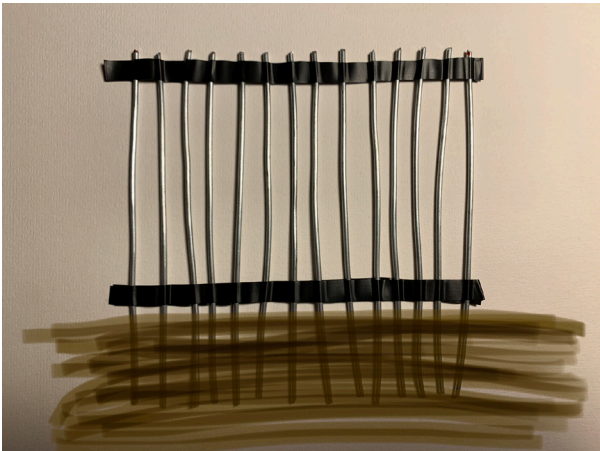


Find the complete sheet online via the QR-Code

To catch the raccoon in your garden a special fence had to be created that allows the raccoon to enter but not leave again. From first solid concepts the fence evolved to a rollable concept with extra entry panels in between.

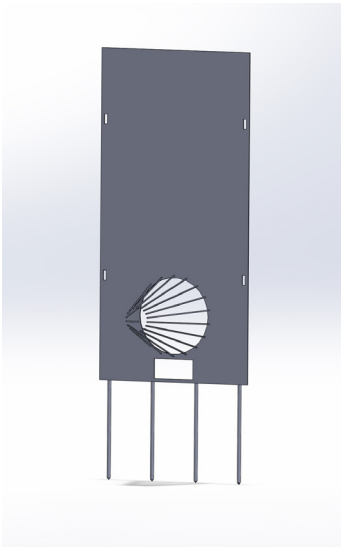
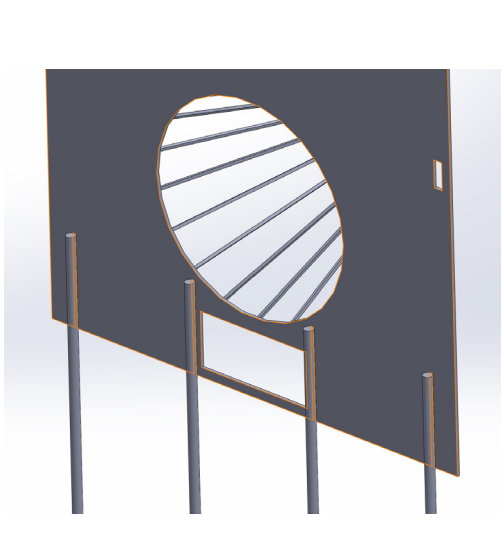
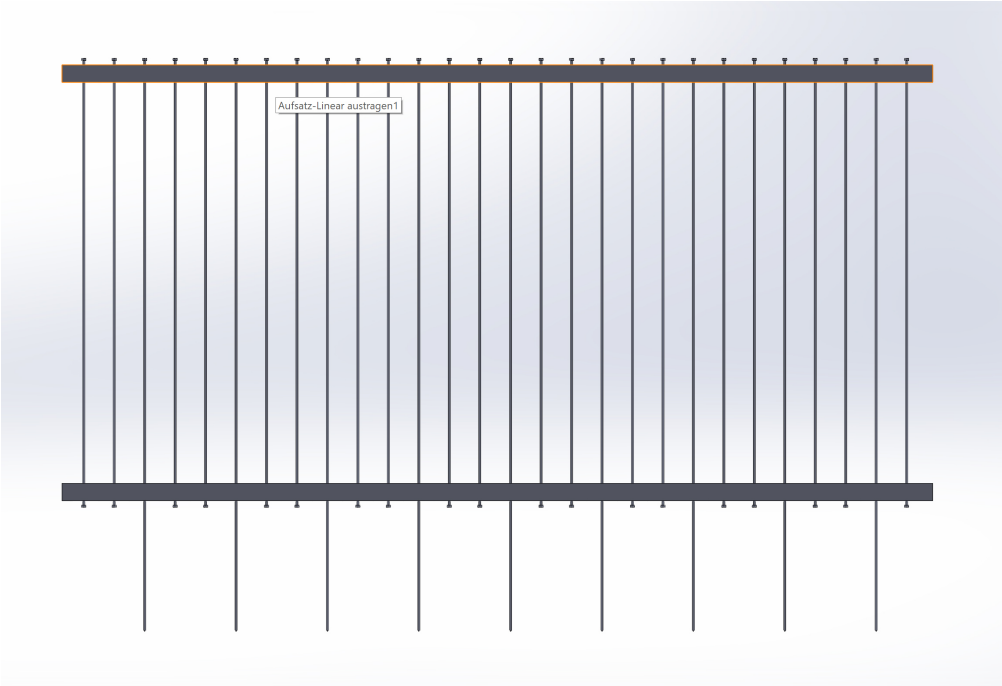
the final model will be made of 1.00 and 1.30 meter long zinced steel rods with a diameter of 10 millimeters and 30 millimeters broad rubber band holding them together. The entry panel will be made of a 1.00 to 0.7 meter wide and 4 millimeters thick metal sheet with 10 millimeters thick metal rods to stick it into the ground and 4 millimeters thick wired for the entrance.





first models

solidworks model



final model



Raccoon Hunting

Lukas Dilger

UdK Berlin

Design and Social Context

WS 2020/21

Prof. Ineke Hans

Assistant Maciej Chmara

Visiting Lecturer Ottonie von Roeder